



ANAKON

ACOUSTIC SPRAY PLASTER BOARD PLASTER SPRAYON

Acoustics & Wellbeing

Reducing reverberation to improve health and wellbeing, while protecting design aesthetic.







Spray applied acoustic ceiling finishes.

Part 1 - SPRAY

A solution to enable designers to explore favourable features such as open-plan layout, without having to consider the design impact of traditional absorption materials. Exceptional acoustic performance is achieved, and as the material is primarily used on ceilings, large areas can be covered to enable maximum control of reverberant noise.

Check the webpage for recent projects.







The most popular one coat system.

1.1 SPRAY datasheet

The most popular spray finish, SPRAY offers excellent acoustic control with an even, coarse texture. Different thicknesses affect the acoustic performance and installation time, and the material can be coloured to suit the project.

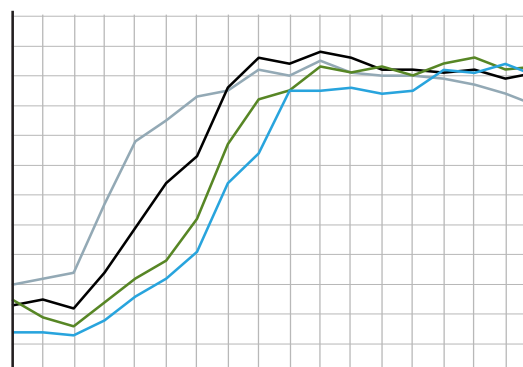
Key Features

- Fast installation
- Covers imperfections
- High sound absorption
- High recycled content
- Cost effective
- Can be patch repaired
- Colour matching
- Applies to uneven surfaces

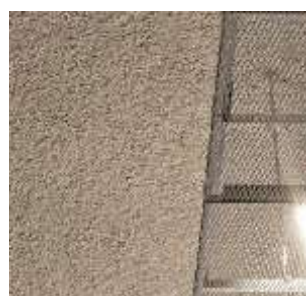
Fire performance

EN 13501-1:2007+A1:2009 B-s1.d0. European equivalent to BS 476: Part 6 & 7 Class O.

SPRAY absorption (354: 2003)



| Build up | α_w | NRC | Class | 125Hz | 250Hz | 500Hz | 1kHz | 2kHz | 4kHz |
|----------|------------|------|-------|-------|-------|-------|------|------|------|
| 0.5 inch | 0,55 | 0.65 | D | 0,15 | 0,25 | 0,65 | 0,95 | 0,95 | 1,00 |
| 0.7 inch | 0,60 | 0.75 | C | 0,20 | 0,30 | 0,75 | 1,00 | 1,00 | 1,00 |
| 1 inch | 0,75 | 0.85 | B | 0,25 | 0,50 | 0,90 | 1,00 | 1,00 | 1,00 |
| 1.5mm | 1.00 | 0.95 | A | 0,30 | 0,75 | 1,00 | 1,00 | 1,00 | 0,95 |





PROSPRAY in black to corrugated metal ceiling.



PROSPRAY POPCONE FINISH



The finest finish for a one process system.

1.2 PLASTER BOARD

PLASTER BOARD is the least textured of the spray-only finishes. Typically used to create a homogenous texture to ceilings and add an extra ambience while also providing excellent acoustic control. Thickness of 10mm board then 15,32,42mm is damped on board.

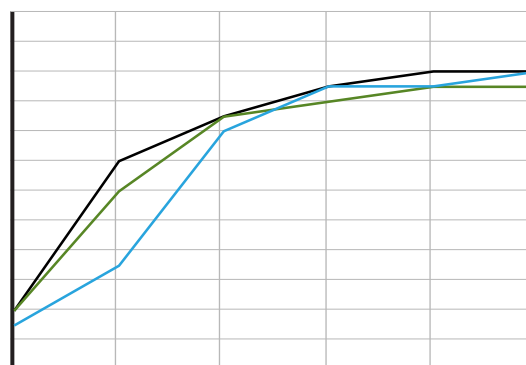
Key Features (BOARD thickness of 10mm)

- Fast installation
- Covers imperfections
- High sound absorption
- High recycled content
- Cost effective
- Can be patch repaired
- Colour matching
- Applies to uneven surfaces

Fire performance

EN 13501-1:2007+A1:2009 B-s1.d0. European equivalent to BS 476: Part 6 & 7 Class O.

PROPLASTER board absorption (354: 200)*



| Build up | α_w | NRC | Class | 125Hz | 250Hz | 500Hz | 1kHz | 2kHz | 4kHz |
|----------|------------|------|-------|-------|-------|-------|------|------|------|
| 15mm* | 0,55 | 0,70 | D | 0,15 | 0,25 | 0,65 | 0,95 | 0,95 | 1,00 |
| 32mm* | 0,60 | 0,80 | C | 0,20 | 0,30 | 0,75 | 1,00 | 1,00 | 1,00 |
| 42mm* | 0,75 | 0,85 | B | 0,25 | 0,50 | 0,90 | 1,00 | 1,00 | 1,00 |

*Improved absorption data soon to be published





One coat followed
by a trowel finish.

1.3 PLASTER datasheet

PLASTER is much more efficient than PROSPRAY, its NRC is much more efficient and semi hardens surface act diffuser too for better noise reduction , and offers fast installation and reduced costs.

Key Features

- Fast installation
- Smoothed finish
- High sound absorption
- High recycled content
- Cost effective
- Can be patch repaired
- Colour matching

Fire performance

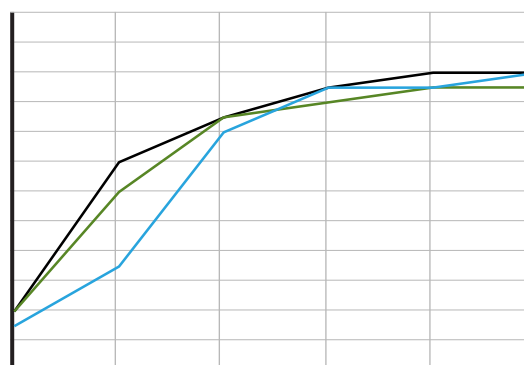
EN 13501-1:2007+A1:2009 B-s1.d0. European equivalent to BS 476: Part 6 & 7 Class O.

| General Features | |
|-----------------------------------|--|
| Material: | High Quality Cellulose Fibre based Acoustic Spray |
| Thickness: | 10 - 12 mm |
| Density: | 65 kg/m ³ (Available Range: 25 kg/m ³ to 125 kg/m ³) |
| Fire Resistance to AS3837: | GROUP 1 |
| Fire Resistance to BS 476: | CLASS 1 |

*Improved absorption data soon to be published

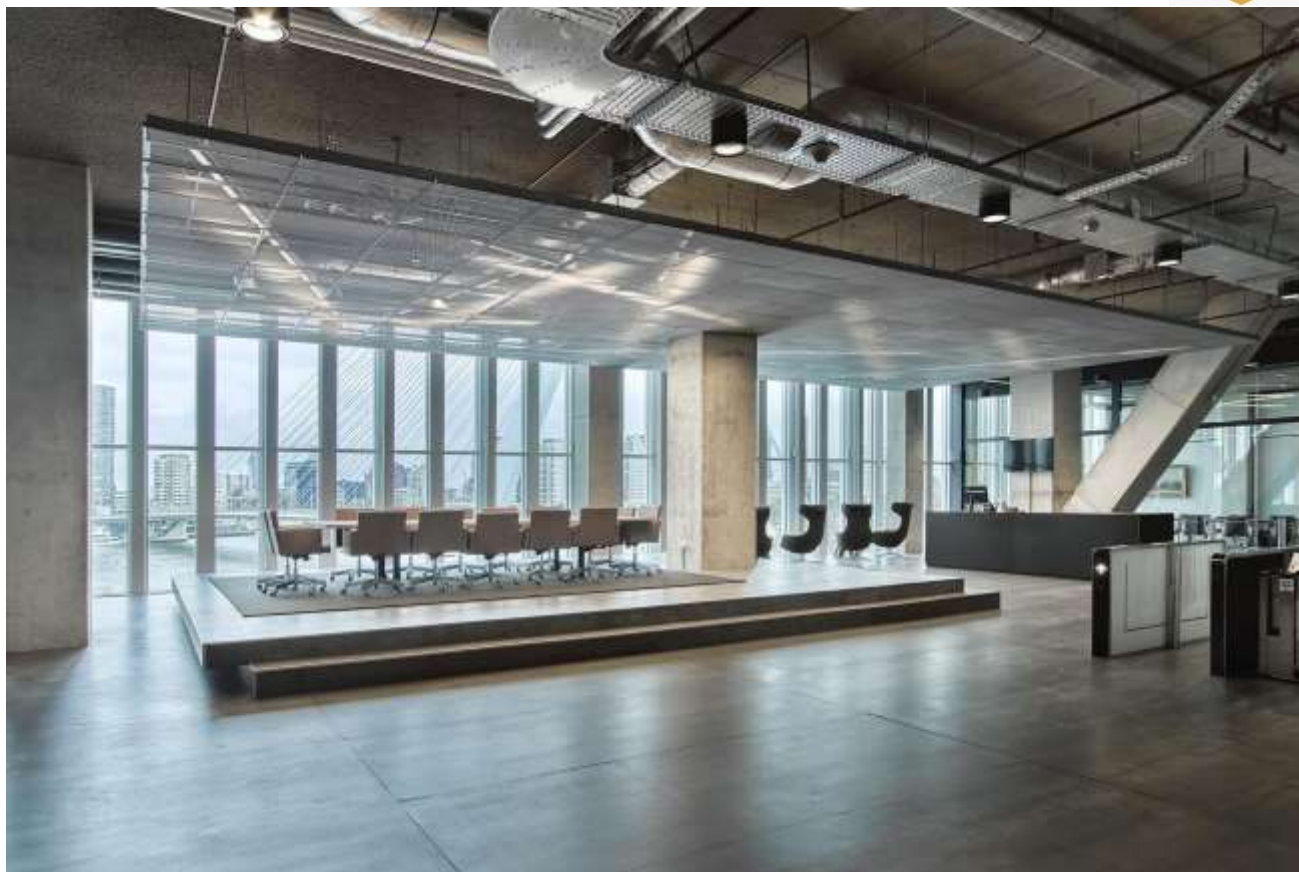
*Can be mounted on PROLAD board for increased absorption

PROPLASTER absorption data (354: 200)*



Acoustical Performance

| Thickness | Absorption Coefficient Value | | | | | | NRC |
|-------------|------------------------------|--------|--------|---------|---------|---------|------|
| | 125 Hz | 250 Hz | 500 Hz | 1000 Hz | 2000 Hz | 4000 Hz | |
| 16mm | 0.05 | 0.16 | 0.44 | 0.79 | 0.9 | 0.91 | 0.55 |
| 25mm | 0.08 | 0.29 | 0.75 | 0.98 | 0.93 | 0.96 | 0.75 |
| 38mm | 0.15 | 0.51 | 0.95 | 1 | 0.99 | 0.98 | 0.9 |
| 50mm | 0.26 | 0.68 | 1 | 1 | 1 | 0.98 | 0.95 |
| 63mm | 0.41 | 0.84 | 1 | 1 | 1 | 0.99 | 1 |
| 75mm | 0.57 | 0.99 | 1 | 1 | 1 | 1 | 1 |



Proplaster in bespoke colour directly applied to uneven surface



Contact us for
bespoke colours.

Colour options

There are a range of standard colours as detailed below. Bespoke colours are also possible. For less heavily pigmented bespoke colours, such as off-whites, pigments are added to the adhesive at the time of spraying. For stronger colours, the fibres themselves are pigmented during production. Minimum quantities apply for this.



Standard White



ILA Grey



Cool Grey



Bespoke design



Light grey



Matt black





A great looking solution with high sound absorption.

2.1 PLASTER HD datasheet

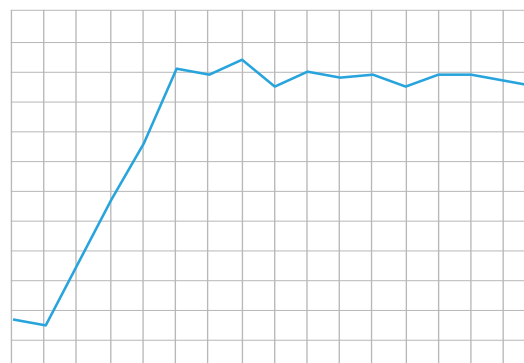
Key Features

- 10-15mm thickness, depending on acoustic requirements
- Can form to curved shapes
- High recycled content
- Can be patch repaired
- Excellent acoustic performance
- Hides wires and tubes
- Light weight

Fire performance

EN 13501-1:2007+A1:2009 B-s1.d0. European equivalent to BS 476: Part 6 & 7 Class O.

Acospray DC1 35mm absorption (354: 2003)



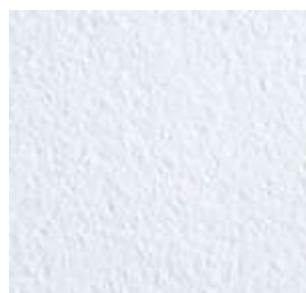
| Build up | α_w | NRC | Class | 125Hz | 250Hz | 500Hz | 1kHz | 2kHz | 4kHz |
|-------------------------|------------|------|-------|-------|-------|-------|------|------|------|
| 10mm board + 35mm spray | 1,00 | 0,99 | A | 0,20 | 0,80 | 1,00 | 1,00 | 1,00 | 0,1 |

Environmental factors

Primarily recycled natural cellulose fibers and mineral fibre board. Well within the EU standards of 5% Borates, making it safe for both contractors and customers. Water based polymer binders

Maintenance and warranty

Easily cleaned with a soft brushed vacuum cleaner and damaged areas can be patch repaired. Comes with 5 year warranty.





ANAKON renders





ANAKON renders.





Quick reference

POP 0001



POP 0002



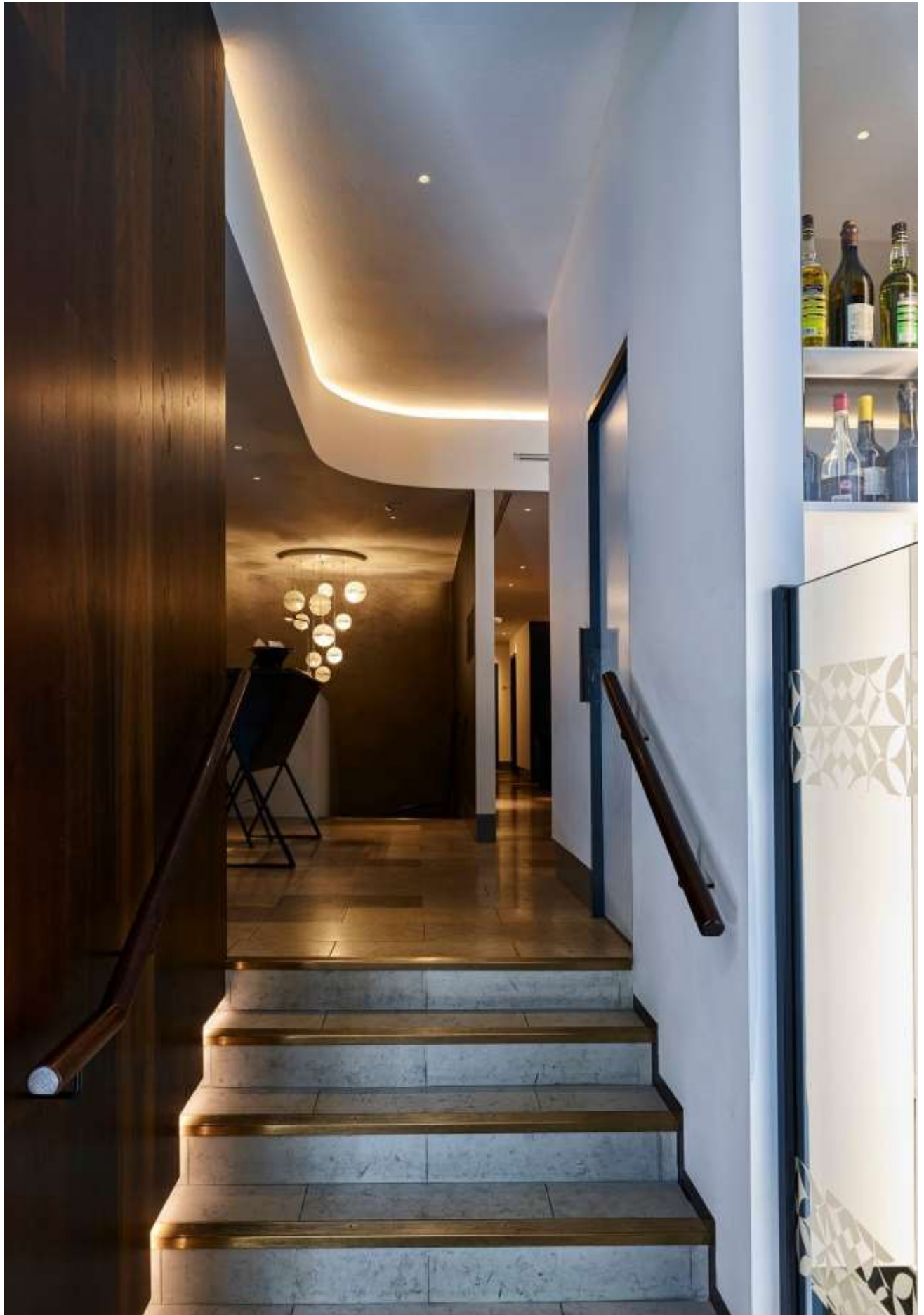
SMOOTH 0001



SMOOTH 0002



| | PLASTER BOARD | | | | PLASTER HD | |
|-------------------------------------|------------------------------------|--|------------------------------------|--|---|---|
| Type | Pop 0001 | Pop 0002 | Smooth 0001 | Smooth 0002 | p1 | p1 |
| Description | Budget spray work. Coarse finish | The most popular finish - finer than DC5, sprayed direct | The finest spray-only finish | DC2 with trowel smoothing after spraying | Finish applied to Acoboard. Lightly textured finish | Finish applied to Acoboard. Smooth finish |
| Acoustics | Class A (α_w 0,95) at 35mm | Class A (α_w 1,00) at 35mm | Class B (α_w 0,85) at 42mm | Class B (α_w 0,85) at 42mm | Class A (α_w 1,00) at 35mm | Class A (α_w 0,90) at 32mm |
| Fire performance | EN 13501-1:2007+A1:2009 B-s1.d0 | EN 13501-1:2007+A1:2009 B-s1.d0 | EN 13501-1:2007+A1:2009 B-s1.d0 | EN 13501-1:2007+A1:2009 B-s1.d0 | EN 13501-1:2007+A1:2009 B-s1.d0 | EN 13501-1:2007+A1:2009 B-s1.d0 |
| Smoothness | • | •• | ••• | •••• | ••••• | •••••• |
| Build up | Spray only | Spray only | Spray only | Spray then trowel | 15mm layer on PROLAD board | 35mm layer on PROLAD board |
| Installation | One coat | One coat | One coat | One coat then trowel | 2 stage | 3 stage |
| Rapid installation | • | • | • | • | | |
| Mounting on suspended gypsum | • | • | • | • | • | • |
| Direct to soffit | • | • | • | • | • | • |
| Curved surfaces | • | • | • | • | some | some |
| White | • | • | • | • | • | • |
| Colour match* | • | • | • | • | • | • |





Installation

All installations are carried out by ANAKON approved installers due to the highly technical nature of the systems, and the specialist equipment required.



Substrates

SPRAY and PLASTER can be applied directly to either concrete, plasterboard, or metal deck ceilings. Plasterboard should have the moisture resistant surface which is readily available. If this isn't used, the boards should be primed first. Prospray (apart from p1) can also be applied to corrugated ceilings and to cover services. Please consult us before specifying proplaster on curved surfaces. Any threaded rods for service applied before application.

Example procedure - Proplaster

1. Substrate is checked for defects
2. Primer applied if required
3. Edge profiles applied if required
4. Boards adhered to the ceiling
5. Seams of boards filled
6. Perimeter is masked off before spraying
7. First layer spray applied
8. Second layer spray applied
9. Finish is troweled smooth
10. Finish is left to dry
11. (F1 only) Finish is sanded

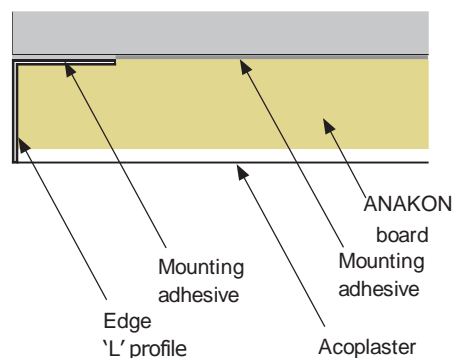
Example procedure - Prospray

1. Substrate is checked for defects
2. Primer applied if required
3. Edge profiles applied if required
4. Perimeter of the room and any sensitive surfaces are masked
5. Apply spray
6. (P1 only) Trowelling performed
7. Edges trimmed
8. Masking removed

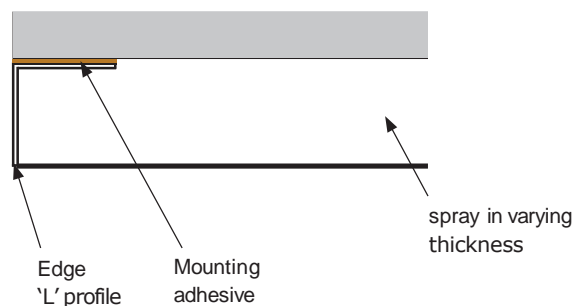
Edges

When working up to a wall, no finishing detail is required. If the material needs to break, an L-profile is commonly used. Please contact us if you require additional information on access hatches, light surrounds, and corner details.

plaster edge detail



spray edge detail





ANAKON
CEILING & ACOUSTICS

CONTACT US :



189A/1, Savitri Nagar, Malviya Nagar, New Delhi Pin Code: 110017



Vanya Marketing Pvt. Ltd. 31-B, 5th Floor, Motia Royal Business Park, Zirakpur- 140603

☎ 18003132100

Email- care@anakon.in

FOLLOW US ON:

